



Xcelsius Web Intelligence Integration Suite (XWIS)

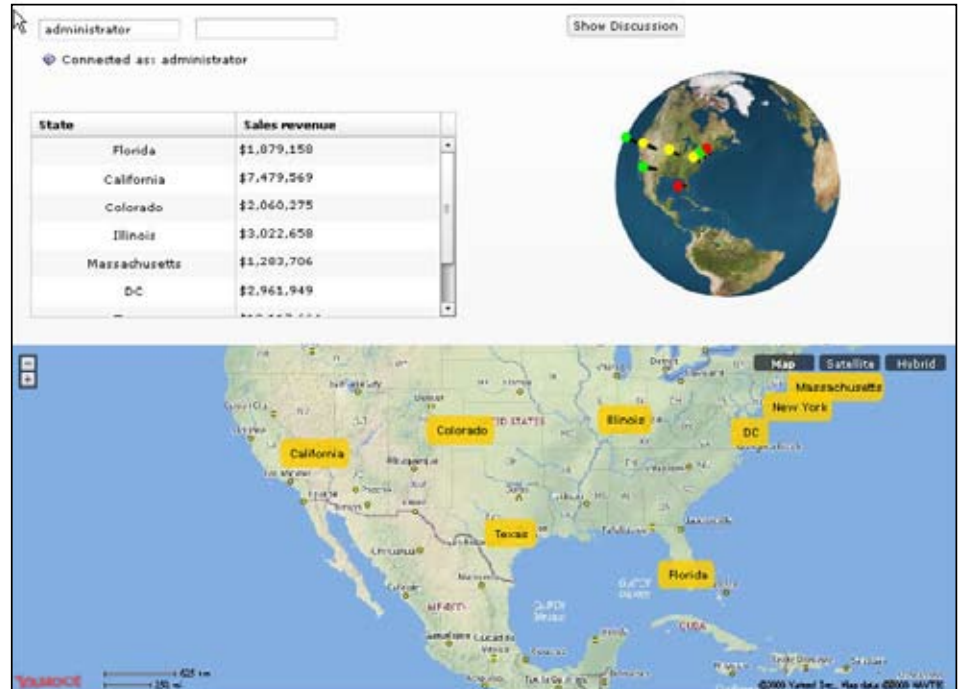
Business Intelligence Solutions

Combining the Query Analysis Power of Web Intelligence with the Sizzling Data Visualization of Xcelsius Dashboards

As the business landscape changes before our very eyes, it has become more important than ever to have critical and accurate information presented to us in a way that we can immediately understand, and easily interact with, in order to make the right decisions. For this reason visual interfaces, like interactive dashboards, are in demand but an attractive looking display is not enough. We also need the ability to retrieve and analyze different data within this dashboard real time and we do not want to be limited by the type or amount of data.

So, what if you could combine the “best of breed” ad-hoc query and analysis tool with the “best of breed” data visualization dashboard tool into a single powerful solution with a dynamic interface that could be viewed through a web browser, in a PowerPoint slide, in a PDF or Word document or, even, embedded in an email?

Now that would be amazing.



Using the Xcelsius 2008 SDK, XWIS delivers a set of Xcelsius Flex components that provide both Web Intelligence integration and improved collaboration capabilities.

The new Xcelsius Web Intelligence Integration Suite (XWIS) can do this and a lot more, making it beyond amazing! XWIS combines the power of Web Intelligence, the premier business intelligence query and analysis tool, with the sizzling data visualization of Xcelsius, the leading

interactive dashboard tool. The seamless integration of these two solutions through XWIS can result in the innovative business intelligence applications that you need to not just weather, but excel, in this challenging economy.

Key Features include:

- ▲ Delivers Web Intelligence information directly within the user’s dashboard
- ▲ Adds drillable Web Intelligence information for dashboard users
- ▲ Empowers users with Slice & Dice capability
- ▲ Add live collaboration to Xcelsius dashboards
- ▲ Builds Web Intelligence data directly with all other Xcelsius components

For more information e-mail infosol@infosol.com or call 623.707.7600

Xcelsius Web Intelligence Integration Suite - XWIS

Integrating the power, drill-down and analysis capability of Web Intelligence with dynamic, animated, data visualization of Xcelsius!

City	Sales revenue
San Francisco	\$3,258,440
Los Angeles	\$4,320,928

The **Discussion Panel** enables the addition of live collaboration to your Xcelsius dashboards, connecting dashboard users together with IM-like discussions, independent of how the model is delivered to the user.

- ▲ View either in crosstab or table mode
- ▲ Drill down directly on the data grid

The **Webi Slice & Dice Panel** allows the user to drill down directly on the data grid, while the information remains on the Webi server. The information can then be viewed either in crosstab or table mode, with interactivity for dashboard users.

	2001	2002	2003
California	\$1,704,211	\$2,782,680	\$2,992,679
Colorado	\$448,302	\$768,390	\$843,584
DC	\$693,210	\$1,215,150	\$1,053,501
Florida	\$405,985	\$661,250	\$811,924
Illinois	\$738,224	\$1,150,659	\$1,134,085
Massachusetts	\$230,019	\$157,719	\$907,169
New York	\$1,667,696	\$2,763,503	\$3,151,022
Texas	\$2,199,677	\$3,732,889	\$4,185,098

Connected as: administrator

DP Viewer DP Slice and Dice DP in a Table DP in Crosstab DP in a Tree

{Title} Crosstab View

Objects

- Year
- State
- Sales revenue

State Sales revenue

- ▲ Drag-and-drop query objects in the Slice and Dice Panel within the dashboard
- ▲ Information remains on the Web Intelligence server