



## InfoBurst® and Crystal Xcelsius® Dynamic Dashboard Distribution

Imagine taking an interactive dashboard and automatically scheduling and distributing it to a network share, a web site, or by e-mail as an attachment or even embedded in the text of the e-mail itself. Further imagine having the choice to view this distributed dashboard locally with the captured data at the time of refresh or connecting to the data source live and having the dashboard refresh dynamically with just a click of the mouse.

Imagine no longer, because all of this and more is now a reality with InfoBurst. By combining the amazing dynamic dashboard capabilities of Crystal Xcelsius for Workgroup with the powerful and innovative distribution and publishing capabilities of InfoBurst, the ultimate solution for delivering effective data visualization solutions to everyone is available now.



### 1. SELECT

| Select                              | Burst Name                               | Ready                               | Owner   | Created   | Modified             | Actions |
|-------------------------------------|--|-------------------------------------|---------|-----------|----------------------|---------|
| <input checked="" type="checkbox"/> | World Cup Burst (1)                      | <input checked="" type="checkbox"/> | SONGLEY | 6/26/2006 | 6/26/2006 by SONGLEY |         |
| <input type="checkbox"/>            | OWF_Example8_Dynamic_WorldCup (7-6-2006) | <input type="checkbox"/>            |         |           |                      |         |

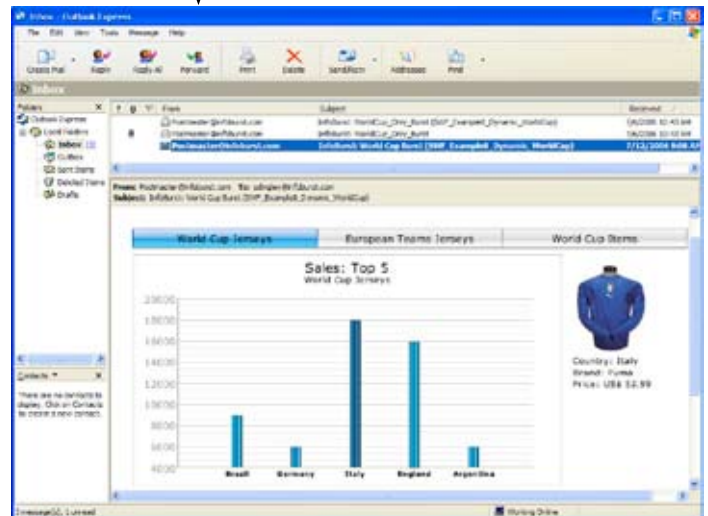
### 2. SCHEDULE + REFRESH

| SELECT                   | IFTY | TIME | USER/ACTION              | SCHEDULE | USER    | STATUS    | LOG | WAVE/EXEC |
|--------------------------|------|------|--------------------------|----------|---------|-----------|-----|-----------|
| <input type="checkbox"/> | TE   | 8:00 | My Distributed Cap Burst | (none)   | SONGLEY | EXECUTING |     | SONGLEY1  |

### 3. DISTRIBUTE + DELIVER



*Dashboard live and connected in PDF.*



*Dashboard live and connected embedded in text or an e-mail.*

**Dashboards may be embedded in commodity products like PPT, Word or PDF and distributed through InfoBurst and connected live to Crystal Xcelsius Workgroup and refreshed dynamically.**

**Contact us for a FREE, no obligation, Web Cast Demonstration 623.707.7600 or [infosol@infosol.com](mailto:infosol@infosol.com)**

## Dynamic Dashboard Distribution: You Have Never Seen Dashboards Like This Before

Using InfoBurst, you can publish a dynamic dashboard in a variety of ways to suit your requirements:

- ▲ Via E-mail as an InfoBurst Dashboard Package (IDP)—this package is intended for a remote user—it will install the dashboard on their PC accessible through a single-click on a desktop shortcut. It will offer them the capability to switch between “Local” and “Live” access to the data, so they can view the dashboard from within or outside of the network
- ▲ Via E-mail as an in-line e-mail—the dashboard is in the body of your e-mail
- ▲ Via E-mail as a file attachment (PPT, PDF, SWF)
- ▲ To Network Share as a file (PPT, PDF, SWF)
- ▲ To Web Server as a viewable dashboard (HTML, PPT, PDF, SWF)

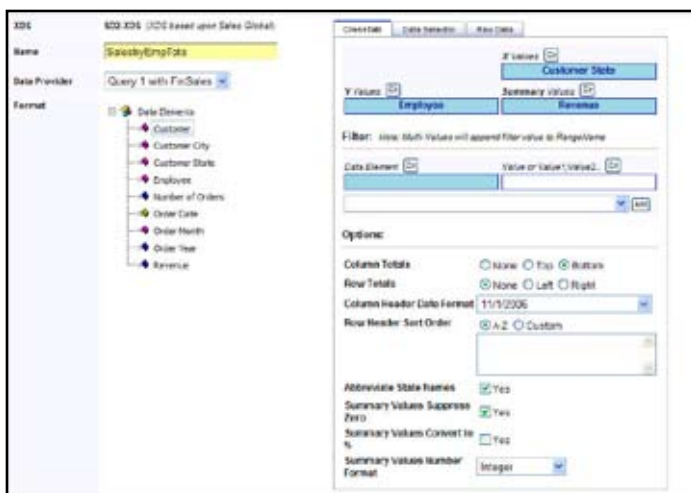
## Optimizing Data Sources for Crystal Xcelsius using InfoBurst XDS

As more users acquire and start to deploy amazing interactive dashboards with Xcelsius, the need and demand for an efficient way to automatically refresh and share these dashboards with large numbers of users is increasing.

InfoBurst XDS, is designed totally around the needs of Xcelsius dashboard developers. It enables you to use a BusinessObjects report (6.x, XI R2 Desktop Intelligence or Web Intelligence) as a data source or to create direct queries on any database. InfoBurst XDS then maps the data ranges from the report queries in the Xcelsius XML Data Button. In addition, InfoBurst XDS offers a set of

powerful data formatting options, such as Cross Tab and Data Selector to precisely generate data ranges that require little or no additional formulas or scripting.

The best part of all is that the data for the dashboard can now be scheduled using the powerful time and event driven scheduling features of InfoBurst with the resulting XML data cached and stored on the InfoBurst server. The Xcelsius dashboard itself will point to the http:// address on the InfoBurst server to get the latest XML for the dashboard. This results in dynamically or manually (press of a button on the dashboard) refreshed dashboards for large numbers of users with excellent performance.



**InfoBurst XDS allows you to select data ranges from a BusinessObjects / Web Intelligence query and format them through a simple interface for direct use within an Xcelsius dashboard.**