



## The Auditing Solution for BusinessObjects

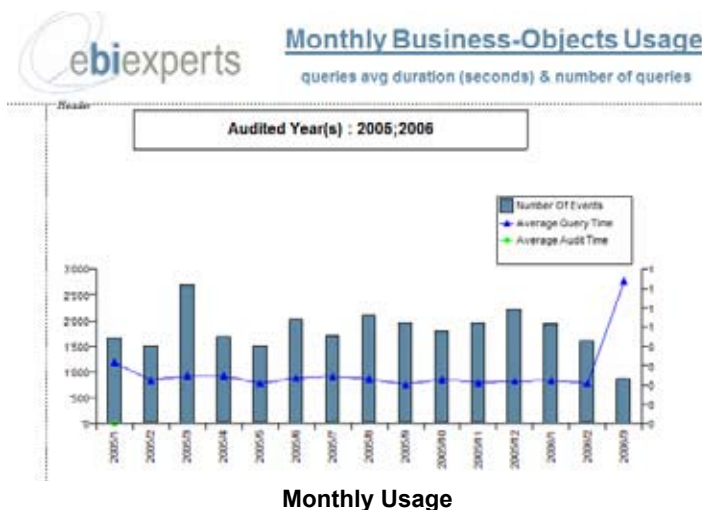
**Enterprise Manager** (EM) for BusinessObjects is a powerful and versatile auditing solution that allows you to monitor and measure key usage statistics and metrics about your BusinessObjects deployment including:

- ▲ Number of user sessions/connections by user
- ▲ Number of documents created, opened, or refreshed
- ▲ Query Time by user/universe
- ▲ Universe object and condition utilization
- ▲ Object and condition utilization
- ▲ Average Query (audit) time
- ▲ Concurrent user load

**Enterprise Manager** can monitor all current deployments of BusinessObjects (Full Client, Zabo, Web Intelligence, Broadcast Agent) and can be combined with the logging features of Web Intelligence or BO Auditor.

**Enterprise Manager** was designed to fit in existing BusinessObjects with minimum impact on the existing installation.

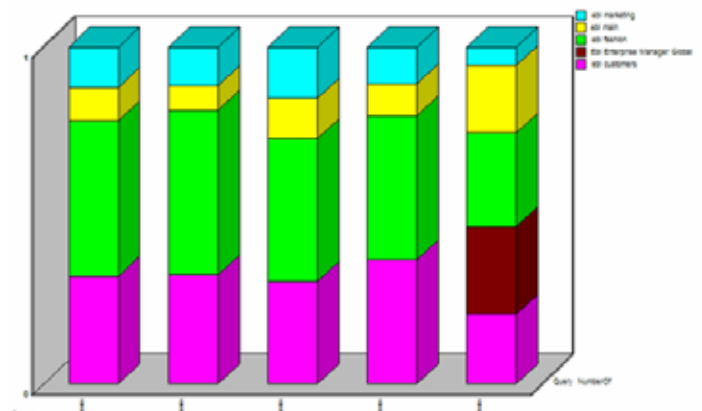
*Enterprise Manager can produce detailed charts and graphs showing usage of BusinessObjects in your environment to enable you to pin-point load problems and better plan for future growth.*



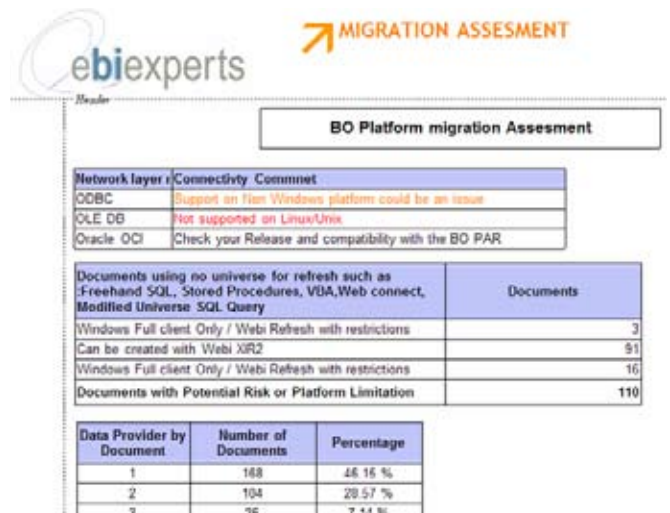
Monthly Usage



Defined Objects vs. Used Objects



Universe Usage

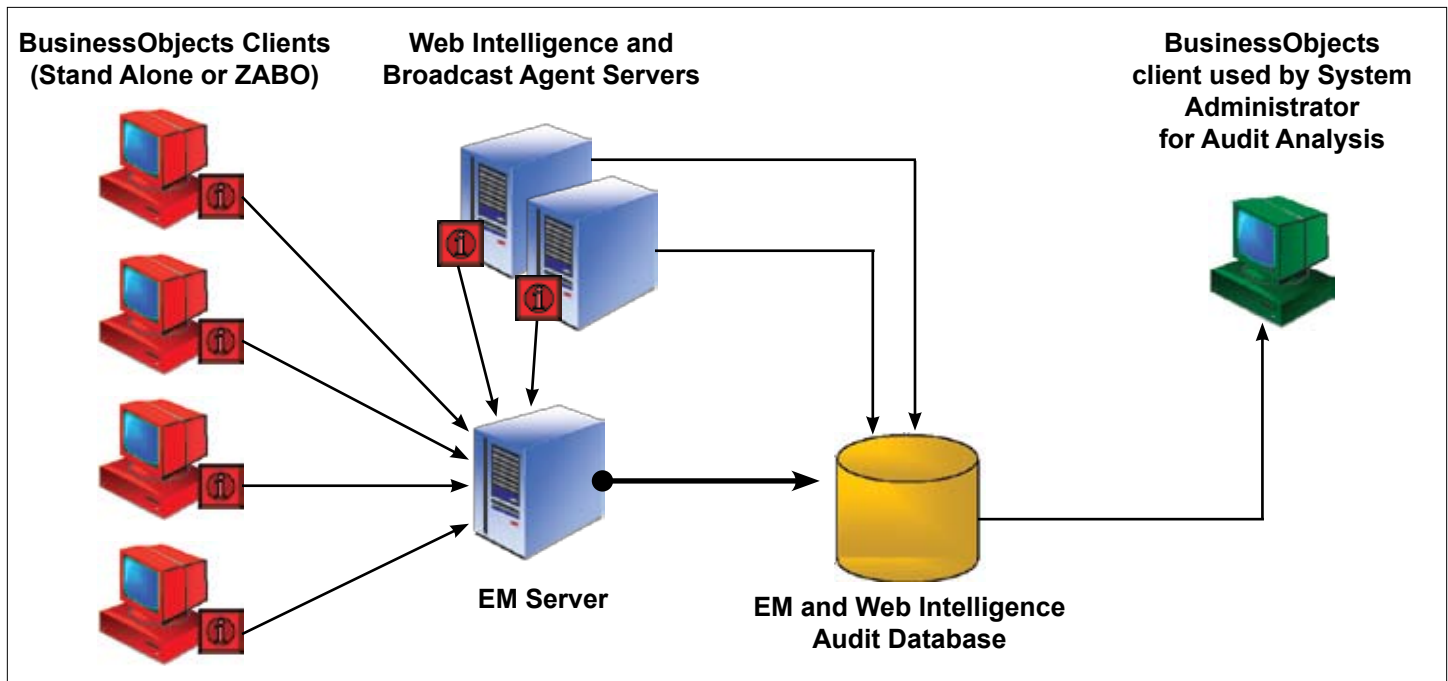
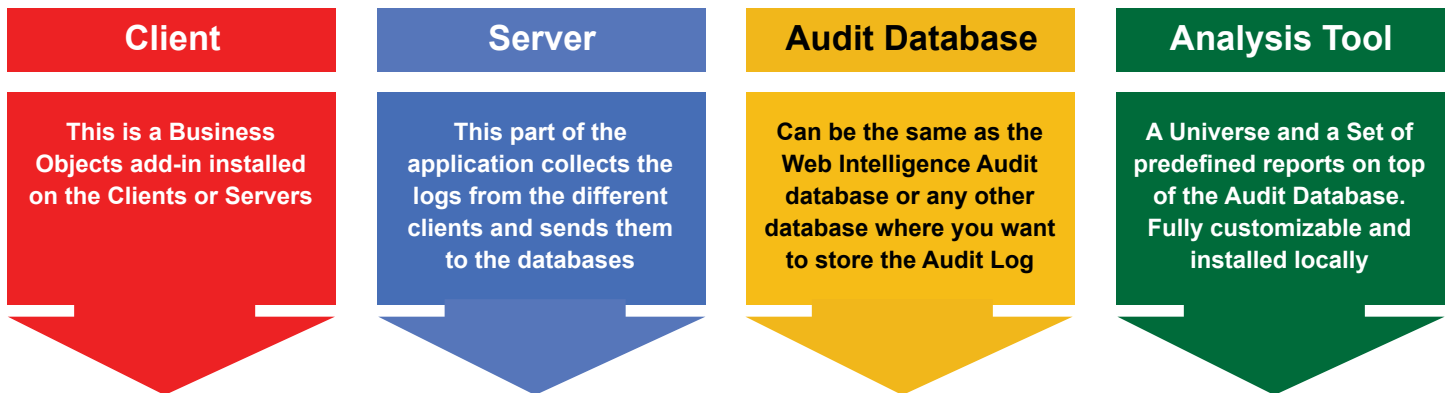


Migration Planning

## A “Must” for all BusinessObjects Owners

**Enterprise Manager** is the BusinessObjects Audit Solution—Simple, Powerful and Versatile:

- ▲ Tracks activities of Full Client users whether they access a BusinessObjects server or not.
- ▲ The overhead is minimal with end users seeing no response time differences.
- ▲ It will support BusinessObjects Queries running against any source.
- ▲ The audit collection database can be Oracle, MS SQL Server, DB2 or MS Access.
- ▲ It can be configured to 7 different levels of auditing from level 1 which tracks only sessions to level 7 which tracks all sessions, queries, objects, prompts and SQL statements.



= EM Add-in at work