



A Fast, Effective Solution to become Competent in BusinessObjects through a Combination of Consulting and Hands-On Assistance



While conventional BusinessObjects training provides a way to learn the fundamentals, it is often difficult to take what you learn in a course and apply it right away on the job. Likewise, consulting can often help to get you started in terms of creating the necessary BusinessObjects universes, reports, and environment you need to do your job, but it usually does not focus on all the functionality that you may wish to use.

By combining consulting, and hands-on assistance, and focusing on a small group of individuals with specific requirements, it is possible to deliver a very effective transfer of knowledge.

InfoSol has taken this idea and created a series of Knowledge Transfer (KT) services.

The services are available in both a packaged solution form and as a customized offering.

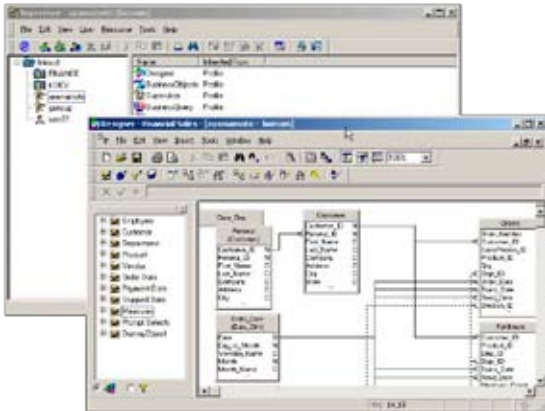
The Packaged Knowledge Transfer Services include the following options:

- ▲ **BusinessObjects Administration**
- ▲ **Dashboard Manager Development**
- ▲ **BusinessObjects Power User**
- ▲ **Getting Started with Xcelsius**
- ▲ **Getting Started with BusinessObjects**
- ▲ **Getting Started with Web Intelligence**

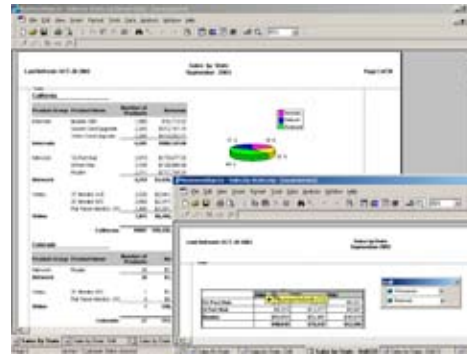
The Customized Knowledge Transfer Services can include any BusinessObjects topics, to any depth, and would typically be anything from one to five days in duration.

Knowledge Transfer Packaged Solutions

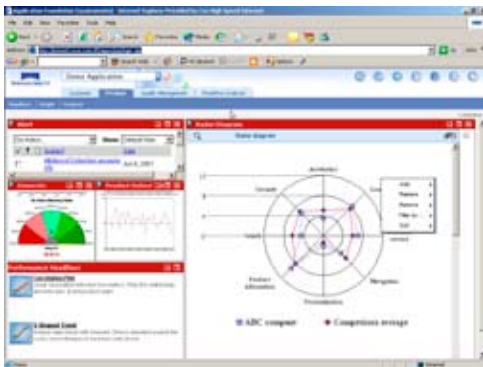
- ▲ **2 day BusinessObjects Administration Knowledge Transfer Service**—Includes Universe design, class/object creation, Supervisor administration, Broadcast Agent administration (for 6.5) or CMC administration (for XI).



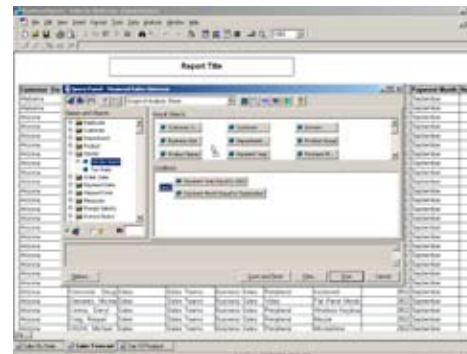
- ▲ **2 day BusinessObjects Power User Knowledge Transfer Service**—Includes usage of advanced query techniques, usage of formula editor, report drilling set-up and usage, adding advanced dynamic formatting to documents.



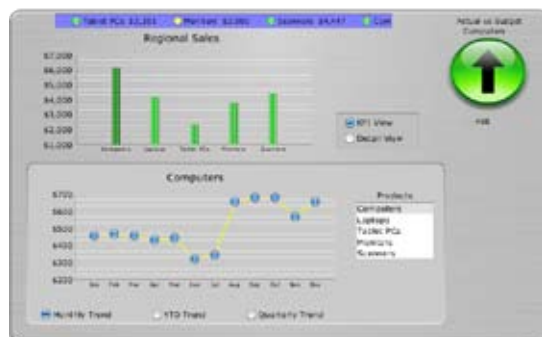
- ▲ **2 day Dashboard Manager Development Knowledge Transfer Service**—Includes installation, set-up of Dashboard Manager, creation of metrics from Universe, development of dashboards.



- ▲ **2 day Getting Started with BusinessObjects Knowledge Transfer Service**—Includes report development and analysis, and using all the common tools and features.



- ▲ **2 day Getting Started with Xcelsius**—Includes usage of Xcelsius Professional or Designer for Workgroup to create dynamic, effective dashboards.



- ▲ **2 day Getting Started with Web Intelligence V6 Knowledge Transfer Service**—Includes report viewing, creation and analysis with Web Intelligence and all the commonly used features and functions.

